

# ALLIANCE NEWS

Volume 14, Number 2  
August 2014



NEWSLETTER OF THE SC ALLIANCE FOR  
HEALTH, PHYSICAL EDUCATION,  
RECREATION AND DANCE

*Promoting Healthy,  
Active Lifestyles!*

## Technology is changing



Technology is changing the landscape of our respective fields. It has been a difficult journey for me since I am a technology newbie. My district has bought into these advances so I must bite the bullet and try to keep up. I am attaching a QR Code to this article with people to follow on Twitter. Since I have joined Twitter, my eyes have been opened to the wealth of information available to me. I strongly encourage you to follow SCAHPERD on Twitter and to like us on Facebook. Important information is made available to you very quickly via these sites.

To our members who work in school settings, please go to [www.letsmoveschools.org](http://www.letsmoveschools.org) and register your school as a Let's Move Active School. The process takes about ten minutes to complete. We have been challenged as a state increase our membership by twenty schools by mid-August. Please take a look at the list below to see if your school is listed. If not and you think you have completed the process, please let me know.

Lastly, we hope to see you at the state conference in November. The planning committee has worked very hard to put together a great program for you. We know times are hard, and schools are limiting travel for teachers but it never hurts to ask. Invite a friend. We would love to see new members. Myrtle Beach in November is a great place to be.

See you in at the Beach. ●

— Todd Seagle, 2014 SCAHPERD President



### MISSION statement

*The mission of SCAHPERD  
is to promote health, physical  
activity and wellness among  
the state's citizens through  
effective leadership,  
professional development,  
education and advocacy.*



South Carolina Association  
for the Advancement of  
Health Education



**GET MOVING**



South Carolina Alliance  
for Health, Physical Education,  
Recreation and Dance  
*Future Professionals of South Carolina*

Newsletter Editor  
Shannon Koch

 Find us on:  
**facebook®**



**The 87th Annual SCAHPERD  
Conference and Exposition  
November 14-16, 2014  
The Kingston Plantation  
Embassy Suites Resort  
Myrtle Beach, SC**



## Happy 90th Anniversary to the American Heart Association

It was June 10, 1924, when a group of six doctors decided to disprove the notion that very little could be done for people with heart disease. They tackled this misconception with the belief that scientific research could ease people's suffering – and even lead to groundbreaking treatments and cures.

Thanks to our many volunteers and supporters, countless lives have been saved and improved since that historic day. We've helped people prevent disease, eat healthier, get active, enjoy healthier environments, and access better.

Just 31 years ago, a PE teacher organized a fund raiser to support the American Heart Association and called it "Jump Rope For Heart." The event is now an important event in the educational life of our South Carolina students. Participants get to jump rope, demonstrating their commitment to living a heart healthy lifestyle while helping others. Our students were empowered to be a heart hero to others in their school, family, community and beyond.



The AHA website, [www.heart.org/jump](http://www.heart.org/jump), is full of jump rope skills, heart healthy living lesson for students in elementary and middle school. Students benefit from a Jump Rope For Heart/Hoops For Heart event in their school in and out of the classroom. In the classroom, the students perform better academically, have better attention and behave better in class. Another benefit for our SC youth is students learn information to live strong and healthy lives.

The JRFH/HFH events are a connection between the school and their community. Thank you to the many volunteers that host events in SC. SC JRFH/HFH coordinators that completed an event in 2013-2014 that collected donations over \$1,000 will receive a free SHAPE electronic membership. Events that raised over \$2,000 will receive a free SCAHPERD membership. If you would like to learn how to host an event you can contact Carmen Plemmons, SC SCAPHERD Coordinator at [CPlennon@lexrich5.org](mailto:CPlennon@lexrich5.org) or 803-476-4600. ●

## Message from the SCAHPERD President-Elect, Lynn Hammond



As President-Elect of SCAHPERD, it is important for me to be mindful that our Alliance represents the interest of each of our member associations. The common ground is well stated in our mission statement:

*...to promote health, physical activity and wellness among the state's citizens through effective leadership, professional development, education, and advocacy.*

I had the opportunity to attend the National Leadership Conference in St. Charles, Missouri July 21st-23rd. While there I heard from our national leaders at SHAPE America, The President's Council on Physical Fitness, Sport, and Nutrition, and other national leaders in our fields as well as other state president-elects and their executive directors. The message from our new national organization SHAPE America is one of unity and working together to have a healthy and fit American citizenry. I am pleased to report that SHAPE America is working to update resources across

the member interest areas for advocacy, standards and support documents, position papers, assessment tools, curriculum materials, and professional development. While each association within SCAHPERD has a particular focus we also have areas where we can work and grow together professionally to provide resources to our members and to our state. Some of those areas are advocacy, member services, professional development, teacher evaluation, leadership development, professional credentialing and networking. One of the sessions I attended was about filling your bucket and how the best way to fill one's own bucket is to add something to another's bucket. Associations can plan together to provide professional development that serves dance, health, and physical education member needs and collaboratively work on advocacy efforts that impact everyone. So as we come together as the SC Alliance for Health, Physical Education, Recreation and Dance let's find ways to fill each other's bucket's so that our Alliance bucket will be filled too! ●

— Lynn Hammond, 2014 SCAHPERD President Elect

# Come to the Conference in November!!!!!!



**YES**, in all caps and bold! Why? Because it will be an amazing event! Though we have not finalized the schedule for presentations, we have over 70 proposals already in. Our general session will be held Saturday morning to

allow everyone to attend and each association will have a contribution during that time. We have a time allotted for poster presentations to allow professionals to share their work in a little different format. And also this year, we will have the SCAHPERD scholar presentation, which we have not had in a few years. Her topic is about working with volunteers during disaster situations. Sessions every day but Sunday will be 75 minutes with 15 minutes in between to allow

people to get to their next session on time and to not rush the presenters. Friday night is our awards dinner where we will recognize individuals who have made significant contributions to our professions. We have numerous vendors coming, including some who have not been here in a while and we have some surprise guests coming as well. Of course, let's not forget it is **AT THE BEACH!!!!!!**



So, yes, come to the conference; share your knowledge; learn some new things; make new friends and reconnect with old ones. Come to the conference...see you in November! ●

— Shelley Hamill, 2014 SCAHPERD Past President

☆☆☆☆☆☆☆☆☆☆☆☆☆☆☆☆☆☆☆☆☆☆☆☆☆☆☆☆☆☆

**Call for nominations for SCAHPERD, SCAAHE, SCAPES, SCDA and SCAFP**

Please visit [www.scahperd.org](http://www.scahperd.org) and click on the Awards tab to locate and print out the appropriate form. Please pay very close attention to the due date for each association's award.

**Submit complete nominations to:**  
 SCAHPERD  
 1301 Columbia College Drive  
 Columbia, SC 29203

☆☆☆☆☆☆☆☆☆☆☆☆☆☆☆☆☆☆☆☆☆☆☆☆☆☆☆☆☆☆

**ADDRESS OR EMAIL CHANGE**

Throughout the year, members change their email or snail mail address. In order to serve you better, please make sure that the office knows about these changes. If your mailing address is different than your residence address, please inform Shannon at (803) 786-3384 or by email at [scahperd@columbiasc.edu](mailto:scahperd@columbiasc.edu).

**CONFERENCE INFORMATION CORNER**

**REGISTER BEFORE SEPTEMBER 26 TO RECEIVE THE EARLY BIRD DISCOUNT!**

---

**CONFERENCE PROGRAM FLYER COMING SOON!**



- Go to [www.scahperd.org](http://www.scahperd.org) for the latest Conference information
- Online Registration
  - Printable Registration Forms
  - Latest Tentative Program Titles
  - Hotel Information
  - Exhibitor Information

# How to Convince Your Principal to Let You Go to the SCAHPERD Conference

Executive Director, Dr. Bonnie-jean Buckett  
[dockjock4@aol.com](mailto:dockjock4@aol.com)



The Annual Fall SCAHPERD Conference is an event that many of the members look forward to attending. If you have attended in the past, you know how the wealth of information is available and the excitement and energy a teacher leaves with is invaluable. Unfortunately, the conference does not fall during your district's in-service dates or during a holiday. It therefore may make it difficult for your principal to give you approval to attend. Here are some tips to help you justify to your principal/coordinator or superintendent the value of going to the conference:

**Don't be afraid to ask** — You never know until you ask. This goes beyond just asking for approval but for funding as well. Talk to your district PE/Health Coordinator to see if there is any grant money. Reach out to the PTA/PTO for donations towards the trip and/or sub if that is an issue. Be sure to share how their children will benefit from what you learn at the conference. If funding is not available, see if your supervisors will build it into the budget for next year.

**Be specific and include teacher effectiveness** — Look at the conference schedule and customize a plan with sessions that will directly benefit the needs of your school. Pick out strategies that will improve your instruction and assessing student's to increase your teacher effectiveness. Share this plan with your principal/supervisor. Be sure to tie in how this plan fits in with school-wide goals and objectives, like common core. Most schools require you to have a yearly plan of teacher development. Again, tie the sessions into your personal yearly goals.

**Make your case with confidence** — Have a game plan before you address your principal/supervisor. Think how you would like the conversation to progress. Create a list of possible questions your principal/supervisor might ask and have confident answers planned. Offer to share what you learned by presenting a professional development with information

to other teachers in your district at a later in-service date. If you are a PYFP or LMAS school, the conference is a good opportunity to obtain professional development opportunities related to those initiative.

**CEU/ CHES/ MCHES and Graduate Credits Available** — The College of Charleston will be offering a graduate credit for a nominal. Information can be obtained by emailing Dr. Andrew Lewis at [Lewisa@cofc.edu](mailto:Lewisa@cofc.edu). CEUs are also available with district approval. Be sure to contact your district office for any district paperwork needed for proper credit. CHES/MCHES credits are available. These are all added benefits towards your professional development plan.

**Request Permission Early** — Organize and see your principal/coordinator as soon as possible. The earlier you go, the more likely they are to grant permission and or have money to subsidize your experience.

**Plan early** — Register prior to September 28 which will save you or your district \$30 on your conference fee. Offer to share your room with other district members. 1-3 bedroom villas are available as well as the Embassy Suites 1 bedroom condos, which includes breakfast which is a savings to the meal costs to you and the district. Offer to travel with other district members which again will save the school system money. ●



## Senate Bill 160 CPR in Schools Progress

This bill would have required all high school students to be proficient in hands-only CPR and AED awareness as part of the already required high school health education class. The bill received a favorable report with amendments from the House Education Committee, but no action was taken by the full House once the bill was placed on the House calendar. Please email your elected officials today and let them know you support CPR in schools.

### MEMBERS ONLY CORNER

As a SCAHPERD member, you have the ability to view current newsletters. Go to [www.scahperd.org](http://www.scahperd.org) and click on the "Members Only" link at the bottom left of the home page and then enter "1948" as the password.



## SCAPES...It is what is good for you!



As your professional association, SCAPES has been working to provide members what they need to be the best possible physical educators and coaches possible. Whether you are an elementary, middle, high school, higher ed or adaptive teacher or a coach at any level, we are trying to provide the resources, experiences and information you need to succeed.

SCAPES provides funds for our annual PEAK (Physical Education, Activities and Knowledge) for the Future workshops. We held our first one last March and are looking forward to providing another this October. Members attended the last one at a price that was less than the cost of lunch. With the wonderful speakers including some excellent sessions for coaches, that was a pretty sweet deal. The October 2014 PEAK for the Future Workshop will be different than what we will provide at the November Conference at Myrtle Beach. We are providing PEAK for the Future because we know that everyone isn't able to travel to Myrtle Beach but if you are able to attend both then you will have different sessions at

each. Please check the SCAHPERD website as school opens for more information.

Those of us that have volunteered to serve as part of the SCAPES leadership cannot do this alone. We need you to first of all **continue your membership and encourage others to join SCAHPERD/SCAPES**. There is great strength in numbers as we all know. We also need you to consider serving in some capacity on committees or as an officer on the board. Please contact me if you would like to be a part of making SCAPES better.

— Jane Abbott, 2014 SCAPES President

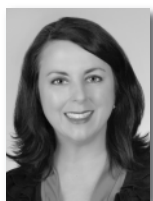
[jabbott1960@gmail.com](mailto:jabbott1960@gmail.com)

@jfabbott – Twitter



**GET MOVING**

## Message from the SCAAHE President



The SCAAHE Executive Board and Conference Planning Committee are working hard to bring you the best SCAHPERD conference ever! We have recruited speakers for this year's SCAAHE breakout sessions that will bring us wonderful, timely, pertinent information on topics for our field. In keeping with the theme of "Get on Board, the Time is Now" we will offer a diverse range of topics to include: how to maximize your CHES credential, policy development, human sexuality, nutrition for better health and performance, injury prevention, working with volunteers, and capacity building — just to name a few. The conference is a great opportunity to network with other Health Educators and to earn CHES/MCHES continuing education credits. Additionally, SCAAHE is planning a special networking social during the conference so you can get to know others in the field

who are utilizing their Health Education degrees in unique and interesting ways. SCAAHE conference attendees are a diverse group of professionals with experience in both higher/secondary education and community/public health. What a great opportunity to learn and network! Come see us at the beach and bring your peers — you won't be disappointed. Please email me [reginacreech@hotmail.com](mailto:reginacreech@hotmail.com) if you have any questions. ●

— Regina Creech, 2014 SCAAHE President





# A HUGE THANK YOU TO ALL SCHOOLS IN SOUTH CAROLINA THAT PARTICIPATED IN JUMP ROPE AND HOOPS FOR HEART 2013-2014



AC Corcoran Elementary School	Buffalo Elementary School	Dover Elementary School	Holy Trinity Catholic School	Mary H. Wright Elementary School	Palmetto Christian Academy	St. Anne Catholic School
AC Moore Elementary School	Burford Elementary School	Draytonville Elementary School	Homewood Elementary School	Mason Preparatory School	Pauline Glenn Springs School	St. Anthony Catholic School
AJ Whittenberg Elementary	Burford Middle School	Duncan Chapel Elementary School	Horrell Hill Elementary School	Mathews Elementary School	Pee Dee Elementary School	St. George Middle School
AR Lewis Elementary School	Burford Academy For Advanced Studies	Dunston Elementary School	Houston Elementary School	Mauldin Elementary School	Pelham Road Elementary School	St. Gregory the Great Catholic School
AR Rucker Middle School	Burgess Elementary	Dutch Fork Elementary School	Hunley Park Elementary School	McColl Elementary-Middle School	Pelion Elementary School	St. James Elementary School
Abner Creek Academy	Burton-Pack Elementary School	EB Morse Elementary School	Hunter Street Elementary School	McDonald Elementary School	Pepperhill Elementary School	St. James Middle School
Academy of Hope	Calhoun Academy	East Aiken School of Arts	Hursey Elementary School	McDonald Green Elementary School	Pickens Elementary School	St. Joseph Catholic School
Aiken Elementary School	Calhoun Academy of the Arts	East Point Academy	India Hook Elementary School	McKissick Elementary School	Pickens Middle School	St. Anne Catholic School
Aiken Middle School	Camden Elementary School	Ebenezer Ave Elementary School	Inman Elementary School	McLees Academy of Leadership	Pine Grove Elementary School	St. Anne Catholic School
AIMS School at Howe Hall	Cane Bay Elementary School	Ebinport Elementary School	Irmo Elementary School	Merriwether Elementary School	Pine Ridge Middle School	Sue Cleveland Elementary School
Allendale Elementary School	Cape Romain Environmental Educational Charter School (CRECS)	Edisto Primary School	JD Lever Elementary School	Merriwether Middle School	Pine Street Elementary School	Sullivans Island Elementary School
Alma Elementary School	Carolina Forest Elementary School	Ellen Woodside Elementary School	JK Gourdin Elementary School	Merriwether Middle School	Pine Tree Hill Elementary School	Summerville Catholic School
Alston Middle School	Carolina Prep School	Fairfield Elementary School	Jackson Middle School	Merriwether Middle School	Powersville Elementary School	Summerville Elementary School
Ambler Elementary School	Carver Elementary School	Fairfield Magnet School for Math and Science	James M. Brown Elementary School	Merriwether Middle School	Pritchardville Elementary School	Summit Drive Elementary School
Anderson Christian School	Carver Lyon Elementary School	Fairfield Middle School	James M. Brown Elementary School	Merriwether Middle School	Prosperity-Rikard Elementary School	Summit Parkway Middle School
Anderson Mill Elementary School	Carver's Bay Middle School	Fairforest Elementary School	Jefferson Elementary School	Merriwether Middle School	Ravencrest Elementary School	Tamasee Salem Elementary School
Andrew Jackson Middle School	Castle Heights Middle School	Fairforest Elementary School	Jefferson Elementary School	Merriwether Middle School	RC Edwards Middle School	Taylor Elementary School
Andrews Elementary School	Caughman Road Elementary School	First Baptist Church School	Jennie Moore Elementary School*	Merriwether Middle School	RH Fulmer Middle School	Taylor's Elementary School
Angel Oak Elementary School	Cedar Grove Elementary School	Flat Rock Elementary School	Jesse Boyd Elementary School	Merriwether Middle School	Mill Creek Elementary School	Thomas E. Kerns Elementary School
Arden Elementary School	Center for Achievement	Flowerstown Elementary School	John P. Thomas Elementary School	Merriwether Middle School	Millbrook Elementary School	Thomas Hart Academy
Armstrong Elementary School	Centerville Elementary School	Forest Acres Elementary School	John W. Moore Intermediate School	Merriwether Middle School	Millwood Elementary School	Three Rivers RTF
Ashley Hall School*	Chapman Elementary School	Forest Heights Elementary School	John W. Moore Intermediate School	Merriwether Middle School	Mitchell Elementary School	Timrod Elementary School
Aynor Elementary School*	Charles Pinckney Elementary School*	Forest Hills Elementary School	Johnkin Middle School	Merriwether Middle School	Mitchell Road Elementary School	Vance-Providence Elementary School
BC Grammar School 1	Charles Pinckney Elementary School*	Forestbrook Elementary School	Joseph R. Pye Elementary School	Merriwether Middle School	Monarch Elementary School	Varnville Elementary School
BD Lee Elementary School	Charleston Catholic School	Fort Dorchester Elementary School*	Keels Elementary School	Merriwether Middle School	Montessori Community School of Charleston	Village School of Gaffney
Ballentine Elementary School	Chastain Road Elementary	Fort Mill Elementary School	Kelly Mill Middle School	Merriwether Middle School	Montessori School of Anderson	WE Parker Elementary School
Barnwell Primary School	Cherokee Trail Elementary School	Fort Mill Middle School	Kelly Miller Elementary School	Merriwether Middle School	Mossy Creek Elementary School	WM Anderson Primary School
Baron-DeKalb Elementary School	Cherrydale Elementary School	Forts Pond Elementary	Kensington Elementary School	Merriwether Middle School	Mount Gallant Elementary School	Waccamaw Elementary School
Batesburg-Leesville Middle School	Chesnee Elementary School	Ft. Johnson Middle School	Keowee Elementary School	Merriwether Middle School	Mount Holly Elementary School	Waccamaw Elementary School
Batesburg-Leesville Primary School	Chester Park School of the Arts	Gadsden Elementary School	Kershaw Elementary School	Merriwether Middle School	Mount Pisgah Elementary School	Waccamaw Middle School
Beaufort Elementary School	Chesterbrook Academy (Preschool)	Gaffney Middle School	Killian Elementary School	Merriwether Middle School	Mount Zion Elementary School	Walker Gamble Elementary School
Beaufort Middle School	Chicora Elementary School	Gallman Elementary School	Kinard Elementary School	Merriwether Middle School	Murray-La Saine Elementary School	Wallace Elementary-Middle School
Beech Hill Elementary School	Christ Our King-Stella Maris*	Gateway Elementary School	Kingbury Elementary School	Merriwether Middle School	Myrtle Beach Elementary School	Wallace-Gregg Elementary School
Beech Springs Intermediate School	Clarendon Hall School	Geiger Elementary School	Kingston Elementary School	Merriwether Middle School	Myrtle Beach Intermediate School	Warrenville Elementary School
Belle Hall Elementary School	Clearwater Elementary School	Gilbert Elementary School	Knightsville Elementary School*	Merriwether Middle School	Myrtle Beach Primary School	Wateree Elementary School
Bellevue Elementary School	Clemson Elementary School	Gilbert Primary School	Laing Middle School	Merriwether Middle School	Nativity School	Waterway Elementary School
Belton Elementary School	Cleveland Elementary School	Goose Creek Primary School	Lake City Elementary School	Merriwether Middle School	Nelson Elementary School	Welcome Elementary School
Belton Middle School	Clio Elementary-Middle School	Granard Middle School	Lake Murray Elementary Chapin*	Merriwether Middle School	New Prospect Elementary School	West End Elementary School
Ben Hazel Primary School	College of Charleston	Grassy Pond Elementary	Lake Murray Elementary School	Merriwether Middle School	Newberry Elementary School	West Lee Elementary School
Bennettsville Intermediate	College Park Elementary School	Gray Court-Owings Elementary School	Lakeside Middle School	Merriwether Middle School	Newberry Middle School	West Pelzer Elementary School
Berea Elementary School	College Park Middle School	Great Falls Elementary School	Lakeview Elementary School	Merriwether Middle School	Newington Elementary School	West View Elementary School
Berkeley Elementary School	Concord Elementary School	Great Falls Middle/High School	Larne Elementary School	Merriwether Middle School	Ninety Six Elementary School	Westcliff Elementary School
Berkeley Intermediate School	Concord Elementary School	Greenville Technical Charter High School	Laurel Hill Primary School*	Merriwether Middle School	Ninety Six Primary School	Westminster Elementary School
Berry Shoals Intermediate School	Concrete Primary School	Greenwood Elementary School	Laurens Elementary School	Merriwether Middle School	North Augusta Elementary School	Westside Christian Academy
Bethel Elementary School	Congaree Wood Early Childhood Center	Gregg Middle School	Laurens Junior High School	Merriwether Middle School	North Central Middle School	Westview Elementary School
Bethel Hanberry Elementary School	Coonway Elementary School	Griggs Rd Elementary School	Laurens Preparatory Academy	Merriwether Middle School	North Elementary School	Westview Middle School
Bethel Learning Center	Cooley Springs-Fingerville Elementary School	Grove Elementary School	League Academy Middle School	Merriwether Middle School	North Springs Elementary School	Westview Primary School
Bethune Elementary School	Coosa Elementary School	HE Bonner Elementary School	Leapart Elementary School	Merriwether Middle School	North Vista Elementary School	Whale Branch Elementary School
Bishopville Primary School	Corinth Elementary School	HE Corley Elementary School	Legacy Charter School	Merriwether Middle School	Northside Middle School	Whale Branch Middle School
Black Street Early Childhood Center	Cottageville Elementary School	Hagood Elementary School	Leaphart Elementary School	Merriwether Middle School	Northwest Elementary School	Whitehall Elementary School
Blacksburg Primary School	Cotton Belt Elementary School	Hammond Hill Elementary School	LeMirra Elementary School	Merriwether Middle School	Nursery Road Elementary School	Whitesville Elementary School
Blaney Elementary School	Cross Elementary School	Hammond School	Lesslie Elementary School	Merriwether Middle School	OP Earle Elementary School	Whitmore Community School
Blenheim Elementary-Middle School	Crossroads Middle School	Hammond School-Lower Level	Lewis Greenview Elementary School	Merriwether Middle School	Oak Pointe Elementary School	Whittemore Park Middle School
Bluffton Elementary School	Crosswell Drive Elementary School	Hanahan Elementary School	Lewisville Elementary School	Merriwether Middle School	Oakbrook Elementary School	Wilder Elementary School
Blythe Academy of Languages	Crowders Creek Elementary School	Hanahan Middle School	Limestone-Central Elementary School	Merriwether Middle School	Oakbrook Middle School	William M. Reeves, Jr. Elementary School
Bob Jones Elementary School	Daisy Elementary School	Hannah-Pamplico Elementary/Middle School	Lockett Elementary School	Merriwether Middle School	Oakdale Elementary School	Williams Memorial Elementary School
Boiling Springs Elementary School	Daniel Island School	Harbisson West Elementary School	Logan Elementary School	Merriwether Middle School	Oakland Elementary School	Wilson Hall
Boiling Springs Intermediate School	Delmar Heights Elementary School	Harbor View Elementary School	Lone Oak Elementary School	Merriwether Middle School	Oakland Elementary School	Windsor Elementary School
Bookman Road Elementary School	Devon Forest Elementary School	Hardeeville Elementary School	Loris Elementary School	Merriwether Middle School	Oakridge Middle School	Windsor Hill Elementary School
Boundary Street Elementary School	Dewey L. Carter Elementary School	Harleyville Elementary School	Loris Middle School	Merriwether Middle School	Oakwood-Windsor Elementary School	Wood Elementary School
Bradley Elementary School	Dobys' Mill Elementary School	Harveyville Elementary School	Lower Lee Elementary School	Merriwether Middle School	Ocean Bay Elementary	Woodfields Elementary School
Brennen Elementary School	Douglas Elementary School	Heath Springs Elementary School	Lucy T. Davis Elementary School	Merriwether Middle School	Ocean Bay Middle School	Woodruff Elementary School
Bridge Creek Elementary		Hemingway Elementary School	Lugoff Elementary School	Merriwether Middle School	Ocean Drive Elementary School	Wright Elementary School
Bridgewater Academy		Hendrix Elementary School	Lyman Elementary School	Merriwether Middle School	Okatie Elementary School	Wright Middle School
Briggs Elementary School		Hodges Elementary School	MC Riley Early Childhood	Merriwether Middle School	Olanta Elementary School	York Intermediate School
Brittons Neck Elementary School		Hollis Academy	Macedonia Middle School	Merriwether Middle School	Orangeburg Prep School	York Preparatory Academy-Lower School
Broad River Elementary School		Holly Hill Academy	Main Street Elementary School	Merriwether Middle School	Orchard Park Elementary School*	
Brunson Elementary School		Holly Hill Elementary School	Manning Junior High School	Merriwether Middle School	Orchard Park Elementary School	
Bryson Middle School		Holly Springs Elementary School	Manning Primary School	Merriwether Middle School	Palmetto Bays Elementary School	
		Holly Springs-Motlow Elementary School	Marrboro School of Discovery	Merriwether Middle School		
			Marrington Elementary School	Merriwether Middle School		
			Marrington Middle School	Merriwether Middle School		
			Mary Bramlett Elementary	Merriwether Middle School		

\*INDICATES THE TOP TEN

## *News from the SCDA President, Linda Cline*

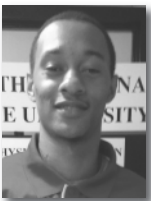


We are getting ready for the beach! The SCAHPERD Convention Committee is busy planning and organizing the annual SCAHPERD Convention to make it even better than last year. The Convention will be November 14-16 in North Myrtle Beach, SC. This past year's Convention was a huge success with our guest artist! And this year our guest artist is Brian McGinnis from Chicago, who performed with Lar Lubovitch Dance Company and Hubbard Street Dance Chicago, among others. Brian will be teaching master classes throughout the 3 day weekend. He will also adjudicate our Kaleidoscope performance on Saturday night and judge our scholarship audition. The Conference is going to have wonderful workshop and class offerings for all of our SCDA members. Be sure to register on the SCAHPERD website ASAP for a full and energetic dance weekend! SCDA is also being represented as a part of the new teacher evaluations which have been in creation since the new year. We have wonderful SCDA members who are representing the best interest of our dance educators throughout the state and they have been working very hard. Meetings and discussion are

being held in which SCDA is having a lot of great input. If you have any information or would like to have input into the teacher evaluations, please contact your local area SCDA representative. I would like to encourage all SCDA members to become active participants in our association. This year we would like to encourage all current members to invite a friend or 2 to join SCDA, so that our membership and support of dance in South Carolina can continue to grow. If you know of someone in dance in South Carolina who is not a member, please encourage them to join and take advantage of the dance, networking, and support opportunities that SCDA has to offer. Members of the board and I hope that we continue to grow our membership to include all facets of dance. Keep up to date with SCDA events and happenings by visiting our Facebook page! ●



## *Message from Spencer Jasper, SCAFP President*



Hi Future Professionals. The Health Sciences Department at South Carolina State University is very excited to host the Superstars event at the 2014 SCAHPERD conference. We are planning and creating some new, exciting challenges for you. Contact has been made with several sporting goods companies and we are delighted to report that a donation came from GOPHER Sports. A t-shirt vendor has been identified, but we are still debating a message for the t-shirt. If you have a suggestion, please send it to my advisors [mscott40@scsu.edu](mailto:mscott40@scsu.edu) and [Fcollins@scsu.edu](mailto:Fcollins@scsu.edu) so we can make a decision for the t-shirt. Lastly, please inform your advisors that we will need them to help monitor the games. See you at the conference.

— Spencer Jasper, President of SCAFP



# FLAGHOUSE®

**A premier global supplier of equipment and resources for physical education, sport, fitness, recreation and health, special needs, special education and multisensory environments. FlagHouse offers more than 20,000 innovative and quality products and solutions.**

“Play Well With Others... Be Active Against Bullying” – visit [www.flaghouse.com/AntiBullying](http://www.flaghouse.com/AntiBullying)

“Preventing juvenile crime and violence” – visit [www.nationalpal.org](http://www.nationalpal.org)

“Jared Fogle foundation to eliminate childhood obesity” – visit [www.jaredfoundation.org](http://www.jaredfoundation.org)

“Coordinated Approach to Child Health” – visit [www.catchinfo.org](http://www.catchinfo.org)

“Project Adventure for character/team work” – visit [www.pa.org](http://www.pa.org)

**For more information about FlagHouse programs, contact John Ruggiero at [John.Ruggiero@FlagHouse.com](mailto:John.Ruggiero@FlagHouse.com)**

[www.scahperd.org](http://www.scahperd.org)

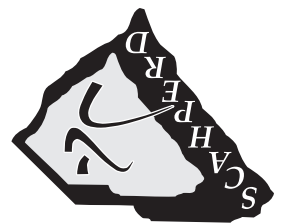
scahperd@columbiasc.edu  
email

803-786-3386  
tax

803-786-3384  
phone

1301 Columbia College Dr.  
Columbia, SC 29203

RECREATION AND DANCE  
PHYSICAL EDUCATION,  
ALLIANCE FOR HEALTH,  
SOUTH CAROLINA



Non-Profit Org.  
U.S. Postage  
PAID  
Permit No. 706  
Columbia, SC  
29210